



Power Generation Equipment

SIEMENS SGT-700 COMBINED CYCLE POWER PLANTS

2 × Complete 45 MW 1×1 CCPP • SGT-700 DLE • Technical Specification Term Sheet

2 Complete Plants Available • 90 MW Total Capacity

Two complete Dry Low Emission combined cycle power plants for sale, each rated at 45 MW. Each plant is built around a Siemens SGT-700 DLE gas turbine (YOM 2019/2020, 10.5 kV, 50 Hz) with only 233 running hours and 19 starts — essentially new condition. Each plant includes an XEMC gas turbine generator, a 2021 Nantong Wanda HRSG, and a 12 MW Dongfang steam turbine generator in 1×1 configuration.

The SGT-700 twin-shaft industrial gas turbine has more than 2 million fleet operating hours across the family, with on-site maintenance-friendly design, dual-fuel capability, and fast-start performance — ideal for industrial power, CHP, peaking, or baseload duty.



Siemens SGT-700 1×1 Combined Cycle Plant — As Installed

<p>90 MW Total Capacity (2 × 45 MW)</p>	<p>233 Hrs Running Hours • 19 Starts</p>	<p>2019/20 Gas Turbine YOM</p>	<p>50 Hz Frequency / 10.5 kV</p>
--	---	---	---

All specifications are nominal values at ISO conditions. Actual performance may vary based on site conditions and fuel quality.

TECHNICAL PERFORMANCE — ISO CONDITIONS

Performance per plant. Gas turbine values quoted at ISO conditions (15°C / 59°F ambient, sea level, 60% relative humidity) on natural gas. Actual site performance varies with ambient conditions, altitude, and fuel quality.

Parameter	Specification
Gas Turbine	Siemens SGT-700 DLE — 31.6 MW(e) ISO (up to ~35 MW in higher rating variants)
Year of Manufacture	2019 / 2020 — 233 running hours, 19 starts
Frequency / Voltage	50 Hz / 10.5 kV
GT Generator	XEMC TFW33.66-4, rated 33.66 MW
GT Efficiency	~37.2–38% (LHV) simple cycle
GT Heat Rate	~9,675 kJ/kWh (9,170 Btu/kWh)
Exhaust	~95–98.7 kg/s at ~531–533°C (988–991°F)
Pressure Ratio / Speed	~18.7–20.4 : 1 • 6,500 rpm turbine speed
Emissions (DLE)	NO _x ≤15 ppmvd, CO <20 ppmvd (at 15% O ₂) • dual-fuel capable with on-load changeover
HRSG	Nantong Wanda model 268/535.5 (YOM 2021) — 43.12 t/h steam at 508°C, 5.95 MPa max pressure
Steam Turbine	Dongfang QF-15-2-10.5C — 12 MW, condensing, non-reheat
Plant Gross Output	~45 MW per plant (GT + ST, net of auxiliary losses)
Plant Efficiency	~52–54.5% (LHV), 1×1 unfired combined cycle

All specifications are nominal values at ISO conditions. Actual performance may vary based on site conditions and fuel quality.

CURRENT CONDITION — LOW-HOUR USED UNITS

These are used units in excellent, low-hour condition:

- Gas turbines manufactured 2019/2020 with only 233 running hours and 19 starts since new
- HRSGs manufactured 2021 by Nantong Wanda Energy & Power Technology Co., Ltd
- Steam turbines by Dongfang Electric Machinery Co., Ltd (Dongfang Electric Corporation)
- Complete, installed 1×1 combined cycle plants — site photos included in this data sheet
- Twin-shaft design (gas generator + power turbine) with high reliability and accessible on-site maintenance

Condition Status: Used — 233 running hours / 19 starts. Sold as-is from current installation; inspection available.

SCOPE OF SUPPLY — PER EACH 45 MW PLANT

Each complete plant includes:

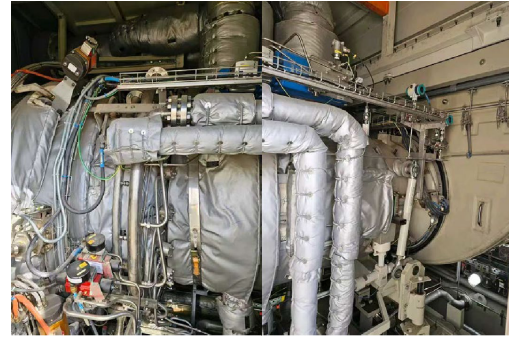
- One Siemens SGT-700 gas turbine, YOM 2019/2020, 33.6 MW, 50 Hz
- One gear box and one Siemens alternator
- One lube oil cooler
- One gas treatment plant and one water treatment plant
- One HRSG and one steam vessel
- One 12 MW steam turbine with steam turbine alternator
- One fire fighting system
- One set of transformers and one control system
- High-voltage cabinet, low-voltage cabinet, and MCC
- HV compensation equipment and tube chimney

SITE PHOTOS — INSTALLED PLANT

The following photographs document the plants as currently installed.



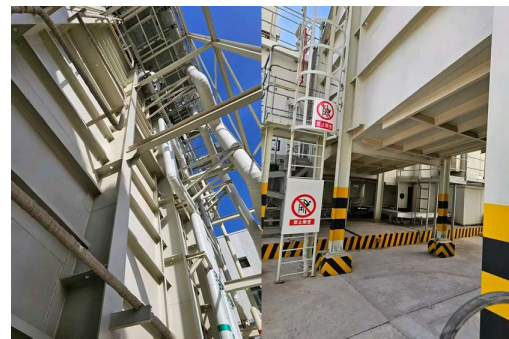
Steam Turbine Generator
12 MW Dongfang STG in the turbine hall



SGT-700 Package — Internals
Gas turbine package internals and auxiliary piping



Plant Site View
Site overview — GT package, HRSG, and stack



Combined Cycle Plant Overview
45 MW 1x1 combined cycle plant — complete installation



Tom • Phone / WhatsApp: +1 (708) 289-8162
procurement@honfinenergyassets.com • www.honfinenergyassets.com

All specifications are nominal values at ISO conditions. Actual performance may vary based on site conditions and fuel quality. All dates are target estimates. Subject to contract. All units are subject to prior sale. First come, first serve.