

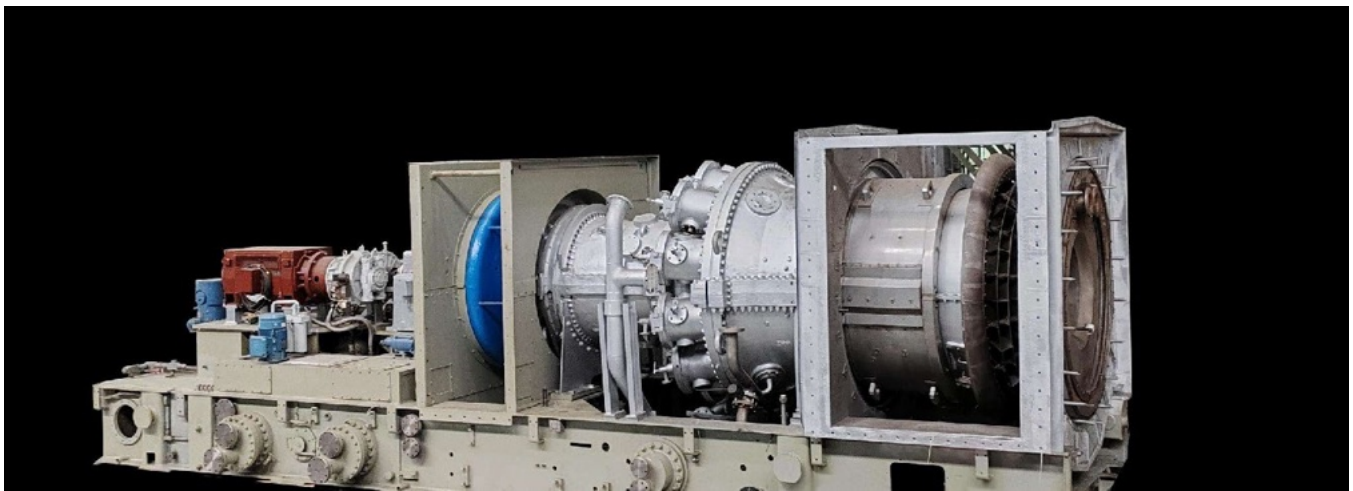
HONFIN ENERGY ASSETS

GE FRAME 6B GAS TURBINES

PG6561B & PG6581B • "Zero Hour" Remanufactured Units • Technical Specification Term Sheet

6 Units Available • 247.2 MW Total Capacity • 100% Refund Guarantee

Six (6) GE Frame 6B gas turbines rebuilt to "Zero Hour" condition, installed in brand new 60 Hz packages. Two units (GT1, GT2) are model PG6561B rated at 39.6 MW ISO; four units (GT3–GT6) are the higher-output PG6581B model rated at 42 MW ISO. Each unit features a new 60 Hz alternator/generator, GE Mark VIe control system, DLN 1.0 combustion, and new auxiliary systems. 247.2 MW in Simple Cycle and 360 MW with optional Combined Cycle options.



GE Frame 6B Gas Turbine Generator Package — "Zero Hour" Refurbished

247.2 MW

Total Capacity

6 Units

PG6561B & PG6581B

0 EOH

Zero Hour at Delivery

All specifications are nominal values at ISO conditions. Actual performance may vary based on site conditions and fuel quality.

TECHNICAL PERFORMANCE — ISO CONDITIONS

Performance specifications for both models offered. All values quoted at ISO conditions (15°C / 59°F ambient, sea level, 60% relative humidity) on natural gas fuel compliant with GEI 41040. Actual site performance varies with ambient conditions, altitude, and fuel quality.

Parameter	PG6561B (GT1, GT2)	PG6581B (GT3–GT6)
Ambient Temperature	15°C (59°F)	15°C (59°F)
Altitude	Sea Level	Sea Level
Fuel	Natural Gas (GEI 41040)	Natural Gas (GEI 41040)
Net Power Output (ISO)	39.6 MW ISO	42.0 MW ISO
Shaft Power Output	36.83 MW at shaft coupling	39.1 MW at shaft coupling
Heat Rate (ISO)	11,747 kJ/kWh (11,134 Btu/kWh)	11,228 kJ/kWh (10,642 Btu/kWh)
Frequency	60 Hz	60 Hz
Combustion System	DLN 1.0 (Dry Low NOx)	DLN 1.0 (Dry Low NOx)
NOx Emissions (DLN 1.0)	9 ppm NOx / 9 ppm CO (dry, 15% O ₂ corrected)	9 ppm NOx / 9 ppm CO (dry, 15% O ₂ corrected)
Control System	New GE Mark VIe	New GE Mark VIe
Generator / Alternator	New 60 Hz Generator	New 60 Hz Generator
Warranty Period	24 months after FOB shipment OR 12 months after COD (whichever earlier)	24 months after FOB shipment OR 12 months after COD (whichever earlier)

Note on heat rate: PG6581B heat rate is quoted as a manufacturer's range reflecting unit-to-unit variation in the refurbished hot gas path. Final per-unit heat rate will be confirmed at Factory Acceptance Test (FAT).

All specifications are nominal values at ISO conditions. Actual performance may vary based on site conditions and fuel quality.

With optional SCR and oxidation catalyst 2 ppm NOx

"ZERO HOUR" REBUILD DEFINITION

Each gas turbine generator is rebuilt to Zero Hour condition, meaning:

- Complete disassembly, inspection, and dimensional verification of all major components
- Overhaul or replacement of all life-limited parts to OEM standards
- Rotor Life Extension (full blade replacement and shaft re-certification)
- Replacement of all critical wear components (seals, bearings, bucket tips, nozzles)
- Hot gas path components reconditioned and qualified for next full HGP interval (24,000 EOH)
- Restoration of all clearances and performance to GE OEM factory specifications
- DLN 1.0 combustion system installed and tuned on all six units
- New GE Mark VIe control system with cyber-security hardening (all six units)
- New 60 Hz generator/alternator, new 60 Hz load gearbox (all six units)

Equivalent Operating Hour Status at Delivery: 0 EOH / 0 Starts — Factory-new condition

PACKAGE SCOPE — INCLUSIONS

Each package includes:

- Gas turbine package with all auxiliaries (lube oil, hydraulic oil, sealing air, fuel gas skid)
- Turbine and generator enclosures (acoustic hood)
- New 60 Hz generator/alternator with excitation and protection systems
- GE Mark VIe control system — TCC control container (all units)
- DLN 1.0 combustion system (all units)
- New 60 Hz load gearbox
- Variable Inlet Guide Vane (VIGV) system
- Factory testing and full documentation package
- Inland transportation in China to Shanghai Port — FOB Shanghai Port (INCOTERMS 2020)

All specifications are nominal values at ISO conditions. Actual performance may vary based on site conditions and fuel quality.

OPTIONAL COMPONENTS — AVAILABLE AT ADDITIONAL CHARGE

Adding options may change delivery times. Pricing provided based on engineering and configuration details. All options listed are new with factory warranty.

- Selective Catalytic Reduction (SCR) system
- Heat Recovery Steam Generator (HRSG)
- Steam Generation Turbines: 1×1 configuration 15–22 MW; 2×1 configuration 35–40 MW
- Combined Cycle Bypass Flue
- Emerson Ovation controls in lieu of GE Mark VIe

WORLDWIDE LONG-TERM SERVICE AGREEMENTS (LTSA)

LTSA services for GE Frame 6B units are available worldwide through Power Systems Manufacturing (PSM) / Hanwha Power, a GE Frame 6B aftermarket specialist offering fully engineered LTSA programs including:

- GE Mark VIe controls support, software upgrades, and cyber-security hardening
- On-site technical advisory, commissioning support, and outage management
- Spare parts supply from OEM-equivalent or PSM-engineered part programs
- Performance upgrades and output enhancement packages

All specifications are nominal values at ISO conditions. Actual performance may vary based on site conditions and fuel quality.

TARGET DELIVERY SCHEDULE

Unit	Model	FOB Target Dispatch	ISO Output	Specification
GT1	PG6561B	July 31, 2026	39.6 MW	DLN 1.0 • GE Mark VIe • 60 Hz
GT2	PG6561B	March 31, 2027	39.6 MW	DLN 1.0 • GE Mark VIe • 60 Hz
GT3	PG6581B	May 30, 2027	42.0 MW	DLN 1.0 • GE Mark VIe • 60 Hz
GT4	PG6581B	August 31, 2027	42.0 MW	DLN 1.0 • GE Mark VIe • 60 Hz
GT5	PG6581B	October 31, 2027	42.0 MW	DLN 1.0 • GE Mark VIe • 60 Hz
GT6	PG6581B	December 31, 2027	42.0 MW	DLN 1.0 • GE Mark VIe • 60 Hz
Totals	6 units	Jul 2026 – Dec 2027	247.2 MW	2 × PG6561B + 4 × PG6581B

All FOB dispatch dates are target dates representing scheduled departure from Shanghai Port. Add 4–9 weeks for ocean transit to a U.S. port. All dates are subject to the delivery provisions of the Sale Contract. FOB Shanghai Port, INCOTERMS 2020. Units located in China.

Payments are settled on a per-unit basis except for the Initial Deposit. Wire transfer charges are the responsibility of the Buyer.

Note: An Independent Engineer (IE) — a qualified third-party technical consultant with GE Frame 6B experience — is available to certify Milestones 2–5. The 5% Warranty Initiation Payment falls due automatically after 180 calendar days from unit arrival at the Buyer's site if commissioning has not been completed for Buyer-attributable reasons.

100% REFUND GUARANTEE

All payments are 100% refundable, without deduction or set-off, if delivery of any unit is blocked by government trade barriers or force majeure causing a delay exceeding six (6) months. Refund applies across the full payment waterfall from Milestone 1 forward. No carve-outs. No retention. No exceptions.

All specifications are nominal values at ISO conditions. Actual performance may vary based on site conditions and fuel quality.

FACILITY PHOTOS — REFURBISHMENT FACILITIES AND OPERATIONS

The following photographs document the refurbishment facility and GE Frame 6B units currently in process.



GE Frame 6B Compressor Rotor

17-stage axial compressor rotor following full blade replacement and life extension



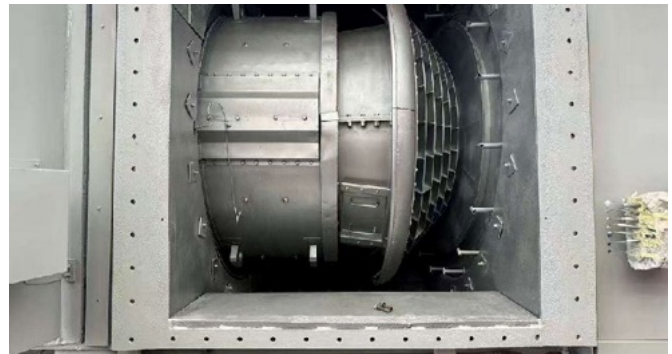
GT Package Structural Baseframe

New fabricated and primed GT package baseframe prior to assembly; structural skid incorporates lube system bays



GE Frame 6B Unit — Pre-Overhaul Inspection

Full gas turbine unit on the shop floor shown on arrival prior to disassembly and Zero Hour overhaul



GT5 GE Frame 6B Turbine — Inlet Section

Inlet section open showing axial compressor stages and inlet guide vanes following overhaul

All specifications are nominal values at ISO conditions. Actual performance may vary based on site conditions and fuel quality.

GT3 PACKAGE & ADDITIONAL FACILITY VIEWS



GT3 GE Frame 6B Gas Turbine Generator Package — Full enclosure and auxiliary systems



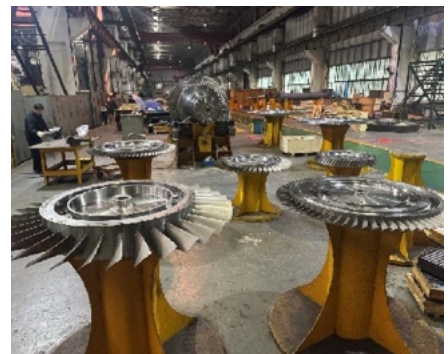
GE OEM Spare Parts in Crates

Factory-sealed GE-branded wooden crates containing OEM hot gas path components and combustion hardware



Generator / Alternator Export Wrapped

New 60 Hz generator wrapped in white vapor-barrier protective packaging for long-term storage and export



Refurbishing Turbine Blades

Turbine blade sets undergoing dimensional inspection and reconditioning to OEM tolerances

HONFIN ENERGY ASSETS

www.honfineenergyassets.com

procurement@honfineenergyassets.com

Phone: +1 (708) 289-8162

All specifications are nominal values at ISO conditions. Actual performance may vary based on site conditions and fuel quality. All dispatch dates are target estimates. Subject to contract. PG6581B heat rate and output subject to FAT confirmation. All units are subject to prior sale. First come, first serve.